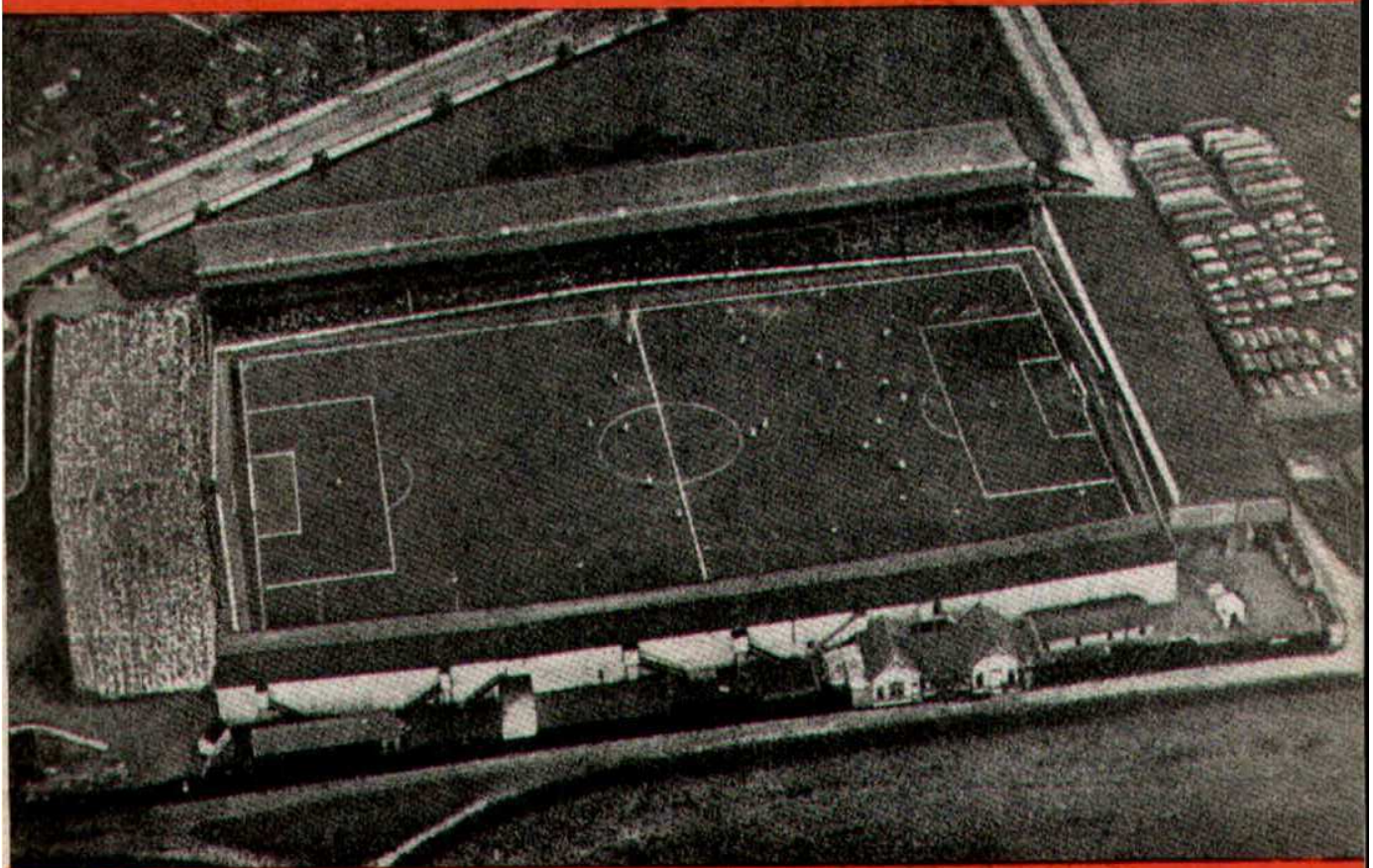




SWINDON TOWN FOOTBALL CLUB



SATURDAY, DECEMBER 23rd, 1961

DIVISION III

SWINDON T. v. C. PALACE

Kick-off 3 p.m.

Official Programme **4d.**

**SOUTHERN LAUNDRY
CO. LTD.**

Launderers and Dry Cleaners



TELEPHONE 4161

STATION RD., SWINDON

GO MODERN — GO ELECTRIC

for

TELEVISION, RADIO AND
DOMESTIC APPLIANCES

D. ROBSON

22 HAVELOCK STREET

6602

Swindon

6602

Make your Goal the

EAGLE HOTEL

(Prop.: Tom Hamilton)

WORTHINGTON :: GUINNESS

DEVENISH BEERS :: BASS

REGENT ST., SWINDON

LITTLE & CO. LTD.

The Name Linked with Service
and Value

*The Popular Ladies' and Men's
Complete Outfitters*



31-32 FLEET ST., SWINDON

Telephone 22831

NEXT MATCH . . .

Division III

SWINDON TN. v. HALIFAX TN.

SATURDAY NEXT, DECEMBER 30th, 1961

Kick-off 3 p.m.

Dr. BARNADO'S HOMES

Take care of 7,500 needy children and
still depend on public support

Send your donation to—

**Barnardo House, Stepney
Causeway, London, E.1.**

Donated by: Mrs. S. Mutch, 60
Cricklade Road, Swindon

LEESE, ING & Co. Ltd.

Incorporating BARKER & CO.

*Mineral Water and
Squash Manufacturers*



LANSDOWN RD., SWINDON

Telephone 22744/22320

HULFORD MOTORS Ltd.

SELF DRIVE HIRE

Fleet of 1961 Fords
Populars - Anglias - Consuls

SHRIVENHAM ROAD

(200 yards from Football Ground)

Phone 4934

LARGE CAR PARK AVAILABLE

For Quality
FLOWERS, FRUIT & VEGETABLES
Also FROZEN FOODS

**CLARKE'S
of Old Swindon**

Proprietors: A. G. G. & J. A. W. HUNT

64 DEVIZES ROAD - SWINDON

'Phone: 22337

ORDERS DELIVERED

SWINDON TOWN FOOTBALL COMPANY LIMITED

Registered Office: COUNTY GROUND, SWINDON

—♦—
Directors:

Mr. W. J. CASTLE (Chairman)

Mr. H. E. LANE (Vice-Chairman)

Mr. B. T. HAMILTON (Hon. Treasurer)

Messrs. C. CHANDLER, J.P., J. DAVIES,

R. FRICKER, C. J. GREEN, F. PLYER, H. WILLIAMS and K. H. WILMER

Manager: B. J. HEAD.

Secretary: R. A. MORSE

VOL. 12

SATURDAY, DECEMBER 23rd, 1961

No. 16

Club Notes

Not only was the result good at Portsmouth last Saturday, but the most gratifying point was the outstanding display of the whole team.

Prior to the game, Portsmouth had played 16 home games without defeat. On the journey someone in the Swindon party said: "There is always a first time." How near did the statement come true? Many who saw the game will say Portsmouth was defeated.

At no time do we wish to criticize referees and linesmen. Their task is never easy, but supporters from Swindon, and indeed many from Portsmouth, including the Directors, thought the scorer of the equalizing goal well offside when he received the ball right in front of goal.

By a strange coincidence, we again faced a winger in whom Swindon had shown interest — Dodson, ex-Swansea. Portsmouth, in fact, introduced two new wingers, the other one being Barton, ex-Fulham and Notts Forest. They certainly made a wonderful start, as in the first minute Dodson scored from a centre by Barton.

For the first quarter of an hour Portsmouth played fast, forceful football. Gradually, however, our lads got on top and might have

scored before half-time. After the interval, Swindon continued to play good football, and on two occasions were very unlucky not to score. Eventually, after 70 minutes, we did score, and what a wonderful goal. Weaver picked up a long pass just over the halfway line, carried it 20 yards, and crossed a hard ball. Summerbee chased it, before it went over the bye-line, and pulled back a fine low centre. The ball was a little to the rear of Hunt, but by leaning backwards, although moving fast, he headed a splendid goal. A few minutes later, Hunt pushed a short ball to Weaver, who crossed it along the ground five yards in front of goal, for Atkins to push the ball into an open goal. Later came the second Portsmouth goal, and the position seemed serious, as O'Hara was suffering from a damaged shoulder and arm through diving at a forward's foot. However, the defence, marshalled by Skipper Owen, allowed very few shots to reach him.

The playing pitch was very muddy and soft, and we feared our lads would tire. It was not so; the older players of our opponents were very weary, and our lads really "ran them into the ground."

No doubt supporters noted that Ralph Hunt scored 3 goals in his first appearance at Port Vale. It is pleasing to hear of ex-players doing

THE WALCOT CHEMIST

WIDE RANGE OF COSMETICS, PERFUMES,
BABY NEEDS AND PHOTOGRAPHIC GOODS

10 SUSSEX SQUARE - WALCOT
TEL. 6680

M. J. REYNOLDS

Grocer

152/154 CRICKLADE ROAD
5479 SWINDON 5479
COOKED HAM OUR SPECIALITY

WATSON'S CENTRAL NEWSAGENCY

LTD.

Swindon's Leading Wholesaler

1 WELLINGTON STREET, SWINDON
Tel. 22049

L. WOLLEN

OFF LICENCE

WINES & SPIRITS

Arkell's Ales and Stout

373 Cricklade Rd., Swindon
Deliveries Daily Phone 3508

CLUB NOTES—continued

well. Our friend, the Sports reporter, will certainly consider his judgment the right one.

This afternoon we entertain a team — Crystal Palace — right in top form. Last week they defeated Torquay 7 goals to 2, and have a chance of promotion to Division 2. We, in our turn, will be out to avenge the 2-3 defeat in the early weeks of the season.

As today is the 23rd December, may we, on behalf of the Directors, Officials, and Players, wish all our

supporters a very Happy Christmas. We trust it will be a good one for the Club. The fixture is not very helpful.

On Christmas Day, the team will leave at 2.30 p.m. (just time for Christmas Dinner), travel to Sheffield and stay overnight. Boxing Day on to Halifax for the game at 3 p.m. Immediately after the match, they will return direct to Swindon, arriving with the milk sometime in the early hours of Wednesday morning. Quite a busy time for our young lads.

FOR ALL YOUR ANGLING NEEDS
CONSULT

FRANK WOODWARD

Swindon's Fishing Tackle Specialist

25 HAVELOCK ST., SWINDON
PHONE 3879

WE ARE SPECIALISTS IN —
OUTSIDE CATERING AND LICENSED BARS
FOR WEDDINGS, FETES, SPORTS DAYS, etc.

THE MASONS ARMS HOTEL

31 HIGH STREET - SWINDON 3522

H. E. LANE

(REGENT STREET) LTD.

The Pork Sausage Specialists

117 Victoria Road, Swindon
Telephone: 22336

COMLEY'S

Modern Music Centre

26 HAVELOCK ST., SWINDON

RECORDS - MUSIC - INSTRUMENTS

Top Twenty "Pops" always in stock
and wide selection of Jazz and Classics

PERSONAL SUPERVISION Phone 3874

FIXTURES AND RESULTS TO DATE

DIVISION III

1961

Aug. 19	Portsmouth	H	1-3
21	Coventry City	A	1-2
26	Crystal Palace	A	1-3
29	Coventry City	H	3-3
Sept. 2	Bournemouth	H	1-1
4	Queen's Park R.	A	1-6
9	Watford	A	0-2
16	Hull City	H	1-1
19	Barnsley	H	1-1
23	Northampton T.	A	2-1
27	Barnsley	A	2-6
30	Lincoln City	H	4-0
Oct. 3	Grimsby Town	H	0-0
7	Brentford	A	0-1
10	Grimsby Town	A	1-0
13	Reading	H	4-1
17	Queen's Park R.	H	0-0
21	Bristol City	A	3-5
28	Bradford	H	3-2
Nov. 4	(1) Kettering T.	H	2-2
8	Kettering T.	A	0-3
11	Shrewsbury Tn.	H	1-2
18	Peterborough U.	A	2-3
25	(2)		
Dec. 2	Newport County	A	2-2
9	Southend U.	H	0-0
16	Portsmouth	A	2-2
23	Crystal Palace	H	
26	Halifax Town	A	
30	Halifax Town	H	

1962

Jan. 6	(3) Notts County	A	
13	Bournemouth	A	
20	Watford	H	
27	(4) Port Vale	H	
Feb. 3	Hull City	A	
10	Northampton T.	H	
17	(5) Lincoln City	A	
24	Brentford	H	
Mar. 2	Reading	A	
10	(6) Bristol City	H	
17	Bradford	A	
24	Notts County	H	
31	(S.F.) Shrewsbury	A	
Apr. 7	Peterborough U.	H	
14	Port Vale	A	
20	Torquay Utd.	H	
21	Newport County	H	
23	Torquay Utd.	A	
28	Southend Utd.	A	
May 5	(Final)		

FOOTBALL COMBINATION

1961

Aug. 22	Leyton Orient	H	0-0
Sept. 6	Southend Utd.	A	1-3
13	Portsmouth	A	1-7
20	Bournemouth	A	0-3
26	Birmingham	H	1-1
Oct. 4	Aldershot	A	1-2
10	Watford	H	1-3
Nov. 1	Millwall	A	0-1
7	Fulham	H	1-4
14	Southampton	H	2-0
22	Coventry City	A	2-1
29	Reading	A	1-3
Dec. 5	Brighton	H	4-2
12	Brentford	A	3-1
19	Charlton	H	

1962

Jan. 3	Chelsea	A	
9	Chelsea	H	
17	Leyton Orient	A	
23	Portsmouth	H	
31	Birmingham City	A	
Feb. 6	Bournemouth	H	
13	Watford	A	
20	Aldershot	H	
26	Queen's Park R.	A	
Mar. 6	Millwall	H	
14	Fulham	A	
20	Southend Utd.	H	
28	Southampton	A	
Apr. 3	Coventry City	H	
10	Reading	H	
17	Brighton	A	
23	Brentford	H	
May 2	Charlton	A	
To be arranged	Q.P.R.	H	

Our Visitors

CRYSTAL PALACE

ROUSE, VIC (Goalkeeper)

Born in Swansea, and signed from Millwall in August 1956. Vic has represented Wales Under 23's versus Scotland and also the Full Welsh International XI versus Ireland. After leaving school, Vic found himself at Millwall as an amateur, but in 1953 signed professional forms. National Service occupied most of Vic's time from '54 to '56, but service and depot games kept him in good trim. With Millwall not being pushed for keepers, he came to the Palace in 1956. Since that time Vic has played some very good games and has really earned the International honours bestowed upon him. Played in every league game last season.

McNICHOL, JOHN (Right Back)

Born Kilmarnock and signed from Chelsea in 1958. Our present skipper, John was one of Chelsea's league-winning side of '54-'55. Although now playing at full back, he started with the Palace as an inside forward, then becoming a wing half, only to change again to full back. His first pro. registration was in 1946 with Newcastle, being transferred to Brighton and Hove in 1948, then again, this time to Chelsea in 1952.

LONG, TERRY (Right Half)

Signed in 1955 from Wycombe Wanderers, Terry was born in Tylers Green. An adaptable player, having appeared at inside forward, full back and half back during the past couple of seasons. Local supporters voted him the most consistent player, together with Johnny Byrne, last season. Also a good athlete and keen all-round sportsman.

PETCHY, GEORGE (Left Half)

Transferred from Q.P.R. last season. George started his career with West Ham, being transferred to Ellerslie Road in 1953. A good, solid player, he has occupied a First XI berth ever since he joined us.

SUMMERSBY, ROY (Inside Forward)

Roy started his professional career with Millwall in 1952. As a school-boy he represented London Schools, and at the age of 17 made his league debut. Also a keen cricketer and golfer, Roy was transferred to us in 1958. Always among the club's leading scorers. An adaptable player, having played at wing half for us, as well as inside forward.

EVANS, GWYN (Centre-Half)

A native of Wales, Gwyn joined us in 1955 from the Welsh club Cwmparc. Last season he made 30 First XI appearances, and will be challenging strongly for that position again this year. A Welsh International School-boy triallist, and a Welsh Boys' Clubs Representative, Glyn has also represented Wales at Basketball, and was the Welsh Snooker Champion in 1954.

BYRNE, JOHNNY (Centre-Forward)

John has 5 Youth International Caps, 3 England Under 23 Caps and a Young England Cap standing to his credit. Turned pro. at the age of 16; the Palace is his only club. Also selected for the England Tour of Portugal, Italy and Austria and played for the F.A. XI versus Spurs. Top scorer last season and the first 4th Division player to represent England. Must surely gain a Full International Cap this season.

UPHILL, DENIS (Centre-Forward)

One of our more recent signings, Denis came to us from Watford, and scored two goals on his debut against Barrow last season. A much-travelled

C. Dunn & Son

BUILDERS & DECORATORS

Alterations, Renovations, Conversions
Plumbers and Sanitary Engineers

503 CRICKLADE ROAD Tel. 22522

FOR PAINTS OF GOOD QUALITY
H. S. HODGES & SONS
(SWINDON) LTD.

CRICKLADE ROAD - SWINDON
PHONE 22422

Dulux, Brolac, Friary, Valspar, Wallcharm, etc.

NOTTON'S CAFE

COUNTY ROAD

200 yards from Ground

RIGHT ON THE BALL

Harold Fleming

24 REGENT CIRCUS - SWINDON

Phone 22813



FOR ALL SPORTS EQUIPMENT

Also, Scout, Guide, Cub and Brownie Wear

OUR VISITORS—continued

player is Denis, having been with Spurs, Mansfield, Reading and Watford. Born in Bath.

SMILLIE, ANDY (Inside Left)

The last of our close-season signings, Andy came to us from West Ham, with whom he gained many Youth honours. Turned professional at the age of 17, after working on the ground staff at Upton Park. 21 First Division appearances to his credit, and also an England Under 20 Cap. Already this season he has played two very good games, scoring two goals.

ALLEN, RONNIE (Outside Left)

Perhaps the most famous member of the side, 5 Full Caps, and a Cup Win-

ner's Medal. Transferred from Port Vale (his first club) to West Brom. for a fee of £20,000. Has scored almost 300 league goals, and made over 500 league appearances. Yet another of our close-season signings, Ronnie has appeared in most of the forward positions, for club and country. Also a keen golfer.

HECKMAN, RON (Outside Left)

Born in Peckham and signed from Millwall in 1960, Ron first signed pro. forms for Leyton Orient in '55, after appearing for Spurs as an amateur. He was selected for Kent and London Amateurs, and also played for England 5 times as an amateur. A regular First XI player throughout last season.

GODDARD & Co.

Wholesale and Retail

WINE - SPIRIT - BEER
AND CIDER MERCHANTS

9 REGENT STREET, SWINDON

Telephone 22415

Also at

4 WINGATE PARADE, SWINDON

We are your **Main Distributors** for
VAUXHALL and **JAGUAR** cars
BEDFORD Vans and Trucks, etc.

Any make of Car or Truck
supplied - Used Vehicles a
specialised part of our
business.

SKURRAY'S
SWINDON

Telephone: 22266

H. HIBBERD LTD.

Plant Hire Contractors

TRACTORS and SCRAPERS
BULLDOZERS
DROTT SHOVELS
DIGGERS
ROAD ROLLERS

40 NEWPORT STREET, SWINDON

Telephone 6125

Swindon Bacon Curing Co. Ltd.

*Specialists in
Bacon, Pork & Cooked Ham*

50 FLEET STREET

SWINDON

Telephone: 22122

WARNES (Swindon) Ltd.

Electrical Contractors
Radio and Television

Contractors to:
SWINDON TOWN FOOTBALL CLUB

51/52 COMMERCIAL RD., SWINDON

'Phone 6346/7

160 COUNTY RD., SWINDON

'Phone 6346/7

9 SWINDON ST., HIGHWORTH

'Phone 379

7 CLIVE PARADE, SWINDON

'Phone 6346/7

DAY RETURN TICKETS

On Weekdays and Sundays (services permitting), available in each direction by any train the same day. From Swindon Junction to:-

	2nd Class
Bath Spa	7/6d.
Bristol (T.M.)	9/0d.
Weston-super-Mare	11/6d.

Other fares available. Ask for pamphlet B7/411, giving full information.

BRITISH RAILWAYS

Western Region

W. B. CARTER

Newsagent, Tobacconist and Confectioner
Large selection of Boxes of Chocolates
always in stock

CORONA, TIZER, DRINKS, etc.

Agents for Wall's Ice Cream

188/190 FERNDALE RD., SWINDON

Telephone: 3089

MILLS & MER

SWINDON TOWN v. CRYSTAL PALACE

SWINDON TOWN

RIGHT WING

Colours: RED SHIRTS, V

O'Hara

Wollen (2)

Morgan (4)

Owen (5)

Summerbee (7) Hunt (8) Smith (9)

Referee—

Mr. J. E. Cooke
(Waterbeach, Cambs.)

**SCORES
EVERY TIME!
FOOTBALL
PIN**

Heckman (11) Smillie (10) Uphill

Petchey (6) Evans (5)

McNichol (3)

Rouse

CRYSTAL PALACE

LEFT WING

These teams are subject to

16-17 BRIDGE ST. S

ENGLAND'S QUALITY SERVICE

Your Car washed in under 10 minutes

THE INSTANT

6/- ANY MAKE —

Local Station

MARLBOROUGH ROAD
SWINDON

QUEENS ROAD
READING

Make your goal . . .

MILROYS RESTAURANT

Top of the Catering League
COFFEE - LUNCHES - TEAS
Parties catered for.
Regent Street, Swindon. Tel. 5294

THE PLESSEY COMPANY Ltd.

After years of achievement have great expansion plans for the future.

TECHNICAL STAFF
CLERICAL STAFF
MANUAL WORKERS

are essential for this progress.

Interested persons please apply to the Personnel Department.

TERRICKS LTD.

L PALACE Kick off 3 p.m.

IDON TOWN

SHIRTS, WHITE SHORTS

LEFT WING

O'Hara

Trollope (3)

en (5)

Chamberlain (6)

Smith (9)

Atkins (10)

Weaver (11)

Linesmen —

Red Flag —

Mr. R. W. Clifton
(Birmingham)

Yellow Flag —

Mr. F. R. Bate
(Stourbridge)



Uphill (9)

Byrne (8)

Allen (7)

Evans (5)

Summersby (4)

)

Long (2)

Rouse

TAL PALACE

re subject to alteration

RIGHT WING

ST. SWINDON

PHONE
5365

U
P
H
O
L
S
T
E
R
E
R
S
•
R
E
M
O
V
A
L
S

INSIST ON Garrard EQUIPMENT



For Superb Tape and Record Playing



Fitted by the World's leading
manufacturers.

QUALITY CAR WASHING SERVICE

in under 5 minutes by

NT CAR WASH

£ — 4 WASHES £1

al Stations:

EENS ROAD
READING

QUEENS ROAD
BRISTOL

WILSONS (SWINDON) LTD.

BUILDERS OF
MODERN ATTRACTIVE HOUSES
AND BUNGALOWS

All enquiries to Head Office:

90 COMMERCIAL ROAD
SWINDON 6361-3

ONE QUALITY ONLY—THE BEST !
FRESH SUPPLIES DAILY

York Road Fisheries SWINDON

WET, DRY or FRIED Tel.: 3680

Rent your T.V. - Washing Machines
Spin Dryers - Electrical Installations
from

D. V. HOLLAMBY LTD.

138 High St., Wootton Bassett, Wilts.
Telephone 295

ALL LEADING MAKES IN STOCK

DEMPSTER ENTERPRISES, offer a modern fleet of 4 and 6 seater self-drive hire cars, for your pleasure and convenience. For advance bookings apply:-

Dempster Enterprises

38 VICTORIA ROAD, SWINDON
Tel. 6460

Howard Autos, Swindon's Main Cotton Motor Cycle distributors always have a good selection of guaranteed used cars for you to choose from.

HOWARD AUTOS

134/5 MANCHESTER ROAD

Tel. 6603

and at 3 WELLINGTON STREET, SWINDON

The Disciplinary Committee of the Football Association has asked Clubs to take every precaution to prevent incidents involving spectators. In addition to any action taken by The Football Association, the Club will take the strongest possible action against any supporters who enter the field of play during a match.

You are reminded that it is forbidden to cross the playing pitch during, and at the end of a game, and the Police have been asked to assist in our efforts to stop any such incidents.

We are determined that the good name of the supporters of Swindon shall be maintained and we ask for your co-operation to ensure this.

'BAILEY'S'

2 Cheney Manor Road - Swindon

NEWSAGENT :: TOBACCONIST
CONFECTIONER

Personal Attention and Satisfaction
always assured.

MEET YOUR FRIENDS FOR AN
ENJOYABLE EVENING AT

THE KINGSDOWN INN

(Host A. W. Vann)

FULLY LICENSED - ARKELL'S BEERS
SNACKS, Etc.

Stratton St. Margaret. Tel.: 3283

A. WHEELER & SON

330 CRICKLADE ROAD

PHONE 22095

FOR QUALITY COALS
AND PROMPT SERVICE

Lowest Terms for Self Drive Cars
* * *
Free Deliveries - Glasses loaned free
for your Wines, Spirits and Beers
115 CRICKLADE ROAD
"The Corner Off Licence"
Ring 4711 or call at

Supporters' Club Notes

The draw for prizes in connection with our Christmas Draw, 1961, was made at our Headquarters on the 12th December, in the presence of a large number of committee members.

Our Competitions Secretary, Mr. F. N. Deane, acted as M.C.; his assistant, Mr. T. W. Stenning, was "Clerk of the Course", while the Draw was made by our Chairman and Honorary Treasurer, drawing numbers alternately.

A pleasing feature was the fact that approximately one half of the prizes went to our friends in the country. We have mentioned on numerous occasions how much we appreciate their patronage, and it was good to see them getting some rewards.

As a matter of fact, the first five major prizes went out of town, and we began to wonder if, in fact, the country members were going to sweep the board, but things began to sort themselves later.

Full lists of the prizewinners have been circulated to the selling agents,

and the prizes have been distributed. The distribution of over one hundred prizes was no small task, and we express our appreciation of the work of the ladies and gentlemen who undertook it.

Our sincere thanks are also due to those who kindly donated prizes. We very much appreciated this expression of goodwill. We hope the winners will enjoy their rewards.

The result at Portsmouth came as a pleasant surprise and should provide encouragement to the team in their efforts against another leading club today.

On behalf of all Officials and Members of our Committee we express our best wishes to all at the County Ground. The Directors and Officials, the players and to the spectators. May this be a really festive season, and prove to be the turning point in the fortunes of the Club.

Lucky programmes at the Southend match on 9th December were held by: No. 101—Mr. Thompson, 42 Kingsdown Road, Upper Stratton, Swindon. No. 2121—Not claimed.

KEY OF THE BOARD

Half-time scores will be given in two sections. First Section indicated by **[1]**. Second Section indicated by **[2]**.

FIRST SECTION

A—Arsenal v. Tottenham H.
B—Birmingham C. v. Sheffield W.
C—Blackburn R. v. Manchester U.
D—Blackpool v. Cardiff
E—Bolton v. Burnley
F—Chelsea v. Aston Villa
G—Everton v. Fulham
H—Manchester C. v. Ipswich
I—West Brom. v. Leicester
J—Leeds v. Liverpool
K—Luton v. Plymouth
L—Middlesbrough v. Leyton O.
M—Newcastle v. Preston N.E.
N—Norwich v. Charlton
O—Southampton v. Huddersfield
P—Swansea v. Brighton
Q—Walsall v. Derby
R—Halifax v. Portsmouth
S—Lincoln v. Watford
T—Northampton v. Hull

SECOND SECTION

A—Notts C. v. Bradford
B—Peterborough v. Port Vale
C—Reading v. Brentford
D—Southend v. Grimsby
E—Barrow v. Exeter
F—Bradford C. v. Aldershot
G—Carlisle v. Stockport
H—Chesterfield v. York
I—Gillingham v. Workington
J—Mansfield v. Wrexham
K—Southport v. Hartlepool

The Rendezvous of all Sportsmen . . .

THE CROWN INN

(Host: Frank Plyer)

Arkell's Best Ales : Fully Licensed
Snacks, etc.

STRATTON ST. MARGARET Tel. 2339

SUPPORT YOUR HOME

CIVIL DEFENCE

Plays a vital part in saving lives

Particulars:

CIVIC OFFICES - SWINDON

WIN OR LOSE !

THE FOOD IN THE

China Restaurant

IS BEST

* * *

107 COMMERCIAL ROAD

SWINDON 6888

Open Daily 12 noon - 11.30 p.m.

For all Chinese and English Dishes

Have you purchased your ticket for the

HALF-TIME

JACKPOT DRAW

TICKETS 6d. each—on sale on the Ground

FOUR PRIZES

Result of Draw on Saturday, 9th December, 1961

1st Prize—£33-12-0. Ticket No. 8725

2nd Prize—£25-4-0. Ticket No. 8842

3rd Prize—£16-16-0. Ticket No. 2891

4th Prize—£8-8-0. Ticket No. 4502

COATE GARAGE



THE ALCOHOL FUEL

REPAIRS
SERVICING
TYRES

★

OVERHAULS
REBORING
WELDING

Props.: E. V. & W. H. Mattick

MARLBOROUGH ROAD, SWINDON

For something a little different, try

DON JONES

HIGH CLASS CONFECTIONER
AND TOBACCONIST

Always a good selection of
SUCHARDS' - TOBLER
TERRY'S

Quality Chocolates and Presentation
Boxes

112 COMMERCIAL ROAD

6012

SWINDON

6012

Typewriters
from £10

FULLY GUARANTEED

DOBELL SHEARMAN

& CO. LTD.

**26 HIGH ST. & 33 FARINGDON RD.,
SWINDON** Telephone 4961

Only 800 yards to your Dream Car—

NEW ALPHA MOTOR Co.
(SWINDON) LTD.

QUEENS DRIVE, SWINDON

Tel. 5062/63

FOR TOP QUALITY USED CARS

Open 7 days per week from 7 a.m. to 10.30 p.m.
Servicing for all makes of cars

HALF-TIME
JACKPOT DRAW

**TODAY'S WINNING NUMBERS WILL BE ANNOUNCED AT
HALF-TIME.**

The following will assist you to record the numbers and prizes as
announced.

1st PRIZE	No.	Amount £.....
2nd PRIZE	No.	Amount £.....
3rd PRIZE	No.	Amount £.....
4th PRIZE	No.	Amount £.....

Winning numbers will also be published in "Evening Advertiser"

**Chappell's Funeral
Service**

(Fun. Dir.: A. A. Winchcombe)

**196 COUNTY ROAD
SWINDON**

24 hour Service Tel. 6073

*Your local "TEAM" for RENAULT
Sales and Service*

**CORONATION
CAR SALES**

67/68 VICTORIA ROAD

Telephone 4964

**SEA VIEW HOLIDAY
CAMP**

YOUR HOST — Mr. BENNETT

* * *

WYKE REGIS - WEYMOUTH
Dorset

"COAL!"
"COAL!"
"COAL!"

J. WILMER

ST. MARGARET'S ROAD, SWINDON

Telephone 22535

MEET YOUR FRIENDS AT THE

Southbrook Inn

(Hosts: Mr. and Mrs. Jack Scutts)

FULLY LICENSED
CLINCH BEERS, ETC.

SOUTHBROOK STREET, SWINDON
Tel.: 5837

STOP!

LOOK!

NU-HOMES

For all Household Fitments

Paints - Emulsions - Wallpapers
Kitchen Units and Bathroom Suites,
etc.

176a Manchester Road
TELEPHONE 22178

*We extend to all our Supporters
Good Wishes for a Merry Christmas
and a Happy and Prosperous New Year*

**BRITANNIA
MOTORS**

Proprietor: A. GODWIN

205-206 RODBOURNE ROAD
SWINDON **PHONE 5303**

- **TYRES**
NEW AND REMOULD
CASH OR EASY PAYMENTS
- **ACCESSORIES**
- **QUICK SERVICE AND REPAIRS**
AT SWINDON'S MOST MODERN
LUBRICATION BAY AND
WORKSHOP

*For High Class
Central Heating, Plumbing
Painting and Decorating
Electrical Installations
and Repairs*

•

NORTH WILTS

Sanitary & Heating
Co. Ltd.

NEWPORT ST., SWINDON

'Phone: 5373/4

Always at your service

L. BIBBY

For all Types, Rags, Iron and Metal,
etc. Spot Cash Paid. Please Telephone
2101 and our van will call.
THE PADDOCK, ERMIN STREET
STRATTON ST. MARGARET

Walcot Greengrocer

G. E. STAMMERS

**1 SUSSEX SQUARE
SWINDON**

SWINDON **22526**

*CAN ALSO BE YOUR LUCKY NUMBER ! ! !
if you ring*

HOLMES & LUCAS

14A REGENT STREET :: SWINDON

for all your

TELEVISION, RADIO AND ELECTRICAL REQUIREMENTS

LUCKY PROGRAMME

Please retain your programme. An announcement will be made at half-time of two numbers and the holders will be given a stand seat at the next Division III game. The persons who purchased the programmes bearing the winning numbers should call at the office after the game and claim their seats.

1483

FRIED FISH AND CHIPS

Always Fresh - Always Hot

WALCOT FISHERIES
Sussex Square

Wet fish and frozen foods all refrigerated display.

HATTON'S NEWSAGENCY
A. J. D. WOODHOUSE & A. SMITH
Newsagents & Tobacconists & Confectioners
Agents for Wessex School of Motoring
Main Booking Agents for Millers Coaches
6 REGENT CIRCUS (NEAR G.P.O.)
Telephone Swindon 22731

For Insurance or Hire Purchase
CARS - CARAVANS - MOTOR CYCLES, etc.
Consult

D. & H. HENTY LTD.
54 COMMERCIAL RD., SWINDON
SWINDON 5258

PANKHURST
The Palace, Gorse Hill,
Swindon

MOTOR CYCLE - SCOOTER AND
THREE-WHEELER SPECIALISTS
Open Mon. to Sat. 9 a.m. - 8 p.m. Phone 5466

MORGAN'S IRONMONGERS
C.A.S.M.S. (Swindon) Ltd.
2 SUSSEX SQUARE, WALCOT, SWINDON
also at 163 RODBOURNE ROAD Tel. 22516
Paraffin services to all areas town and country
Everything for the home
Precision Tools for Engineering Trade.
Tools for all trades

Maylott Studios
For GROUP & SPORT Photographs
OFFICIAL PHOTOGRAPHER TO
SWINDON TOWN FOOTBALL CLUB
31 FARINGDON RD. Tel. 22792